

CUL8R

Some drivers like to choose a combination of letters and numbers for their license plate that sends a message. These are called "vanity plates." Perhaps their message will tell you about something they like or what they do for work. Can you correctly match the following people with their license plates? HINT: Having trouble? Try reading the plates out loud. Single letters can be used to represent a whole word. Sometimes numbers are used as part of a word. For example "CUL8R" is "See You Later."



- Pediatrician
- Big family
- Person with bad memory
- Comedian
- Patient person
- Impatient person
- Lonely tennis player
- Mom's reminder before a trip
- Patriotic person
- Family who likes to skate
- Polite person
- Computer person

US4EVR

XQZME

SK8RS

TOTDOC

I4GOT

HRDDRV

H82W8

IMFUNE

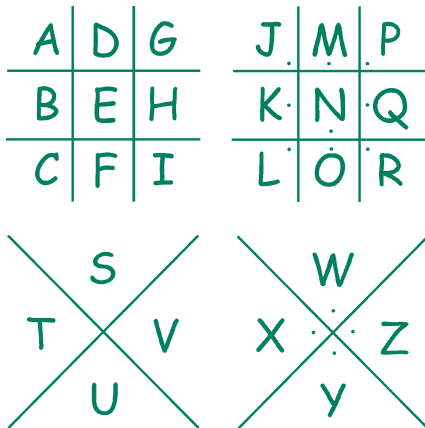
5KIDZ

10SNE1

W8NC

PB4UGO

Parking Lot



The following code is called a "parking lot code" because each letter is parked in a space that has a unique shape. To send a message, draw the outline of the parking space each letter is in, including the dot if there is one. For example, here is how to send the message "LOOK AT THAT":



Can you decipher this secret message? HINT: You may hear this a lot on a long trip!



PUZZLE ANSWERS

CUL8R

US4EVR
US Forever

Patriotic Person

TOTDOC
Tot Doc

Pediatrician

H82W8
Hate To Wait

Impatient Person

10SNE1
Tennis Anyone?

Looking For
Tennis Partner

XQZME
Excuse Me

Polite Person

I4GOT
I Forgot

Bad Memory

IMFUN
I'm Funny

Comedian

W8NC
Wait And See

Patient Person

SK8RS
Skaters

Skating Family

HRDDR
Hard Drive

Computer Person

5KIDZ
5 Kids

Big Family

PB4UGO
Pee Before You Go

Mom's Reminder

Parking Lot

A R E W E
└┐ □ √ □

T H E R E Y E T ?
> □ □ └ □ ▲ □ > ?