

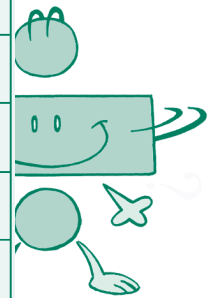
The Sieve of Eratosthenes

The Sieve of Eratosthenes is a method for finding prime numbers on-a number grid, and you can try it yourself by working with a number grid. • -First, circle the 2, then cross out all the numbers that are multiples of 2. • -Then, circle the next number not crossed out, 3, and cross out all numbers that are multiples of that number. • -Continue to circle the number closest to the beginning and cross out all its multiples until all the numbers are circled or crossed out. • -When you are done, the circled numbers are **prime** numbers and the crossed-out numbers are **composite** numbers.

Who's That?

Eratosthenes (276–194 B.C.) was born in Cyrene, North Africa (now Libya), and died in Alexandria, Egypt. He was a well-rounded scholar who investigated many areas of math and science. He estimated the circumference of the Earth to be about 24,400 miles. Now we know it's about 24,900 miles—

	2	3	4	5	6	7	8	9	10
11	12	13	14	15	16	17	18	19	20
21	22	23	24	25	26	27	28	29	30
31	32	33	34	35	36	37	38	39	40
41	42	43	44	45	46	47	48	49	50
51	52	53	54	55	56	57	58	59	60
61	62	63	64	65	66	67	68	69	70
71	72	73	74	75	76	77	78	79	80
81	82	83	84	85	86	87	88	89	90
91	92	93	94	95	96	97	98	99	100



PUZZLE ANSWERS

The Sieve of Eratosthenes

	②	③	4	⑤	6	⑦	8	9	10
⑪	12	⑬	14	15	16	⑰	18	⑲	20
21	22	⑳	24	25	26	27	28	㉑	30
㉓	32	33	34	35	36	㉗	38	39	40
㉙	42	㉛	44	45	46	㉝	48	49	50
51	52	㉟	54	55	56	57	58	㊱	60
㊳	62	63	64	65	66	㊵	68	69	70
㊷	72	㊹	74	75	76	77	78	㊻	80
81	82	㊽	84	85	86	87	88	㊿	90
91	92	93	94	95	96	㉟	98	99	100

Prime Numbers: 2, 3, 5, 7, 11, 13, 17, 19, 23, 29, 31, 37, 41, 43, 47, 53, 59, 61, 67, 71, 73, 79, 83, 89, 97