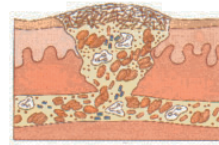
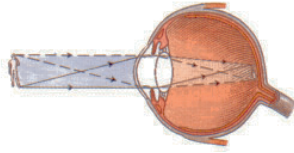


A COLLECTION OF ACTIVITIES TO ENHANCE THE



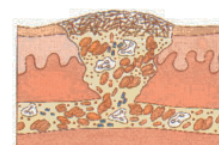
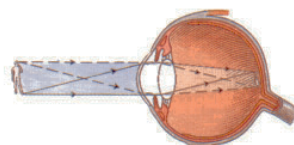
EYEWITNESS BOOK & VIDEO



HUMAN BODY

Eyewitness
Human Body
Activity Pack

Created by
 teachervision.com



Name _____ Date _____

Human Body Scavenger Hunt

1. The thyroid gland is found in the armpit. True or False?

2. Name the two actions of breathing.

3. How many bones make up the skull?

4. Why did Wilhelm Roentgen name his discovery "X-ray" ?

5. What are the three main parts of the brain?

6. Your inner ear helps you to hear and to detect:

7. If you didn't cut your fingernails for one year, how long would they be? _____
8. Name the hardest substance in the human body.

9. What does lymph do?

10. Why doesn't the stomach digest itself?

Human Body Scavenger Hunt – Answer Key

1. False. The thyroid gland is found in the neck. (p. 40)
2. Inspiration and expiration (p. 25)
3. Over 20 different bones make up the skull. (p. 15)
4. Roentgen did not know the nature of the rays he discovered, so he called them X-rays. (p. 13)
5. Brain stem, cerebellum, and cerebrum (p. 60)
6. Motion and balance (p. 55)
7. One yard (p. 51)
8. Enamel, the covering on teeth (p. 48)
9. Collects wastes, distributes nutrients, and carries white blood cells around the body to fight infection (p. 41)
10. The stomach produces thick, slimy mucus which prevents the stomach lining from being digested. (p. 37)

Name _____ Date _____

Human Body Wordsearch

R E S P I R A T I O N I O P U I
A C S D F G H J L A N E R D A L
D I G E S T I O N U U H J J H K
P R H E C Y M S I L O B A T E M
O C W O O H C A L U P A C S N T
L U Q A R T E R Y V B D L R Z L
I L A R T M C F E M U R O P Y R
U A S T E N O X B F O G L D M T
T T X T X M Z N F I N O D N E T
T O C G M O P L E U B B V D C G
R R C V N M U L O C L A N I P S
E Y P A T E L L A D S A B F G G

Word Bank:

ADRENAL
HORMONE
ENZYME
TENDON
METABOLISM
CIRCULATORY
SPINAL COLUMN

ARTERY
CORTEX
DIGESTION
SCAPULA
PATELLA
FEMUR
RESPIRATION

Human Body Wordsearch – Answer Key

R	E	S	P	I	R	A	T	I	O	N						
	C							L	A	N	E	R	D	A		
D	I	G	E	S	T	I	O	N								
	R	H		C		M	S	I	L	O	B	A	T	E	M	
	C		O	O			A	L	U	P	A	C	S	N		
	U		A	R	T	E	R	Y						Z		
	L			T	M		F	E	M	U	R			Y		
	A			E		O								M		
	T			X			N				N	O	D	N	E	T
	O							E								
	R			N	M	U	L	O	C	L	A	N	I	P	S	
	Y	P	A	T	E	L	L	A								

<p>Word Bank:</p> <div style="display: flex; justify-content: space-between;"> <div style="width: 45%;"> <p>ADRENAL</p> <p>HORMONE</p> <p>ENZYME</p> <p>TENDON</p> <p>METABOLISM</p> <p>CIRCULATORY</p> <p>SPINAL COLUMN</p> </div> <div style="width: 45%;"> <p>ARTERY</p> <p>CORTEX</p> <p>DIGESTION</p> <p>SCAPULA</p> <p>PATELLA</p> <p>FEMUR</p> <p>RESPIRATION</p> </div> </div>	
---	--

